

**RD-500 ds SERIES BGA/SMT REWORK MACHINE
FOR STABLE AND SAFE REWORK**

Designed for Standard or Lead Free Solders, Small Boards to Medium Size, Large or Small Components



- High powered Upper and Lower Hot Air Heaters
- IR Area Heating System
- Complete PC Control and Auto Profiling Software
- Security Lock-out System
- 2 Point Profiling To Control Target Component Overheating
- Profile Inspection System
- 5 Thermocouple Input Capability
- Integrated Component Preparation System
- Semi-Auto Placement
- Extensive Safety Features

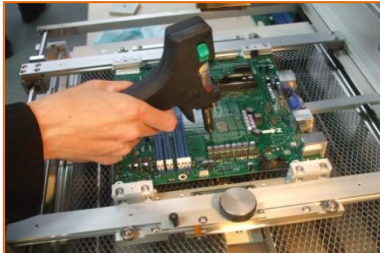
TOTAL - SOLUTION - REWORK

Preparation, Alignment, Placement and Heating

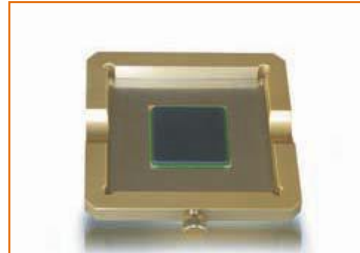
Remove



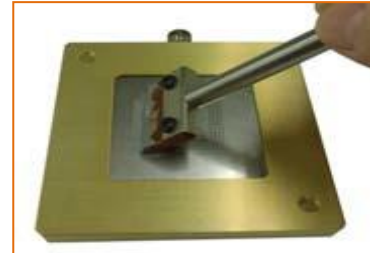
Clean



Stencil



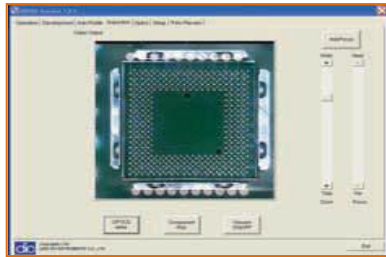
Paste



Pick



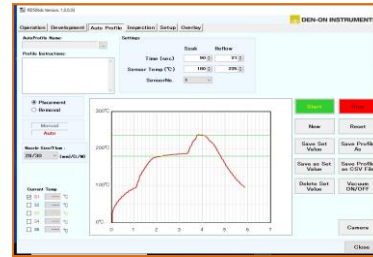
Align



Place



Profile



Description

- Maximum Board Size
- Device Size Range
- Overall Placement Accuracy
- Top Heater
- Bottom Heater
- Area Heater
- TSR Top and Bottom Heaters
- TSR Area Heater
- Computer/Controlled
- Machine Dimensions
- Overall Weight
- Air Requirements
- Electrical Requirements

Specification

- 400mm x 420mm
- 2mm-50mm
- +/-0.025mm
- 700Watt Hot Air
- 700Watt Hot Air
- 3IR400 Watt Total 1200
- 0-650°C
- 0-650°C
- OS Windows 8.1 to 10
- 580W x 580D x735H (without foot)
- Approx. 50KGs
- 80L/min.0.35Mpa
- AC 200-230V 2.6 kw
- (1.4kw for Main Body, 1.2kw for Area Heater)