



# Technicon

Optical Inspection

# TRONIK

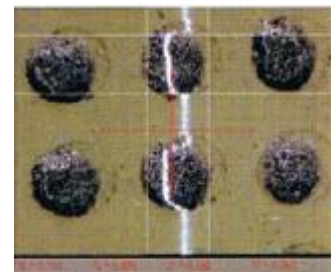
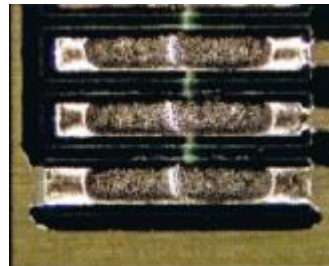
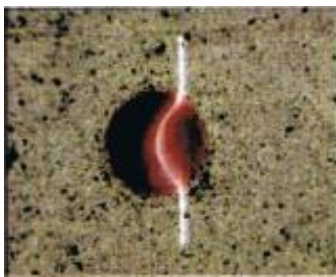
## Z-Check 100™

The Z Check 100 is a highly accurate, 2D non-contact solder paste measuring system. It has a fast, user-friendly, windows® based software interface. The measurement of the solder pad is performed by placing the PCB directly on the base. This is then easily moved around until the desired pad appears onscreen. The operator then centralises the pad on the computer monitor, boxes the pad using on-screen scalar lines, clicks the mouse and an instant Z-height measurement will be displayed. Simultaneously X, Y and Volume measurements are also calculated.

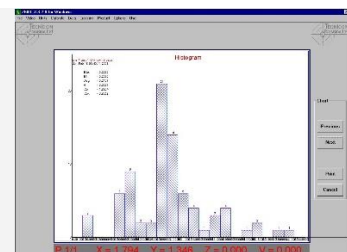
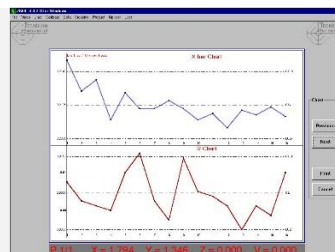
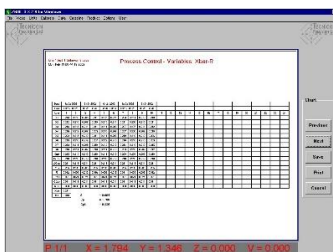


With any inspection type machine data analysis is paramount. The Z-Check 100 has as standard a comprehensive SPC package. With the vast array of PCB's that the Z-Check is able to handle, the user has the option of 10 production lines with unlimited products within those lines to choose from, creating a large library of data.

### On Screen Images



Saved data can be viewed at any time during the process on any or all production lines. Data can be presented as an X-bar chart, R-bar chart or as a histogram with full SPC reporting. The image on the screen can be saved and printed to photographic quality.



Full SPC in Histogram, x bar, r bar and Excel formats as standard

E:Sales@Technicon.co.uk

W:www.Tecnicon.co.uk

T: +44 (0) 1323 891840

# Z-Check 100™ SPI For 25 years



## Major Features:

- Controls 10 production lines with unlimited products
- 3 axis measurement and volume
- Automatic Z-axis measurement
- Measures diameters, angles, centre's and irregular shaped areas
- LED light source
- Full SPC Video capture
- 21.5" Led wide screen monitor
- Computer with user friendly Windows software

## Other Facilities:

### Geometric Functions

In addition to measurements of rectangular or square pads, Z-Check 100 will display the angle measurement.

### Angles

Angles can be measured by clicking the mouse on reference points. Z-Check 100 will display the angle measurement.

### Circles

Circles are measured by clicking the mouse on a minimum of three reference points. The computer will generate the best fit circle and display the diameter. A second circle can be added and the diameter and distance between centre's displayed.

### Irregular shape.

Reference points of any irregular shape, the area of the shape is automatically calculated and displayed. The circle and area functions can be combined with the automatic Z function to calculate the volume.

## SPECIFICATION:

<b>Magnification (FOV)</b>	3mm x 2mm on screen	<b>Throat Depth</b>	330mm (13")
<b>Computer</b>	I5 Intel Processor	<b>Operating System</b>	Windows 10®
<b>Micro slit Illuminator</b>	Cree Led 12v 5w	<b>Optical System</b>	5MP USB camera
<b>Surface Illuminator</b>	Led Ring Light ( 5v 3w)	<b>Monitor</b>	1 21" HDMI Led
<b>Max PCB Size</b>	600mm x 600mm (26" x 26")	<b>Overall Size</b>	650mm(L) x 500mm(W) x 430mm(H)
<b>Max sample height</b>	15mm (0.6")	<b>Gross Weight</b>	20kg's
<b>Focussing Range</b>	15mm (0.6")	<b>Power</b>	240v AC 50/60HZ (110v option)

**Tecnicon Ltd reserve the right to change specification without prior notice**

