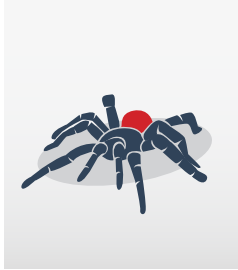




RELENTLESS ALL-TERRAIN DISPENSER

Precise, Fast, Adaptive & Versatile

naturally adaptive.



tarantula.

RELENTLESS ALL-TERRAIN DISPENSER

Introducing – The Tarantula – Multitasking expert. State of the art technology with a wide range of applications.



CELL SOLUTION

LINE SOLUTION

Integration in any line

dispense technology.

- Up to 3 valves simultaneously
- 5 different valves, large application range

process control.

- Monitoring sizes & weight of dispense dots
- Process control adjustment and dot stabilisation

productivity.

- Up to 145'000 dots/h (with Piezo Jet Valve)
- Up to 2'000'000 dots/h in line mode

large dispense area.

- PCB size 560 x 610 mm, optional 1'800 x 610 mm
- Up to 80 mm programmable Z stroke (3.15")

mineral cast chassis.

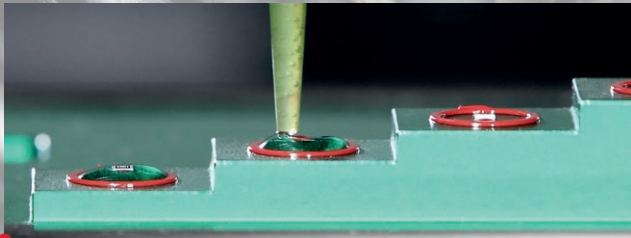
- No vibration, symmetrical mineral casting
- No warpage, no thermal drift

linear motors.

- Fast, reliable double drive linear motors
- No maintenance, longest lifetime

naturally adaptive.

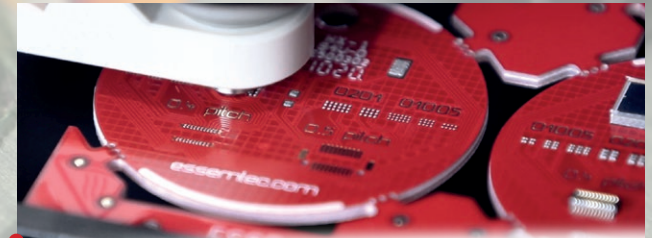
INTEGRATE INTO HIGH SPEED LINES AND HIGHLY COMPLEX DISPENSE APPLICATIONS



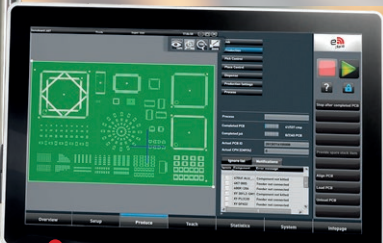
Versatile range of dispensing applications such as Solder Paste and SMT Glue, LED Encapsulation, Silver Epoxy, Dam and Fill, Underfill, Cavity Fill, 3D Dispensing via laser height mapping. Standard cleanroom according to ISO7 (class 10'000).



Full operator support - Automated error analysis & KPI. Training, support and troubleshooting via advanced remote access. Investment protection; all options and heads retrofittable. Modules are expandable in any direction.

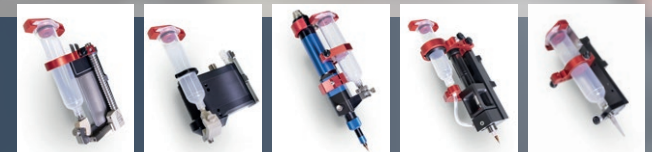


Three processes at the same time. Plug and Play for valve change. Piezo Jet Valve - super high speed for low viscosity. Solder Jet Valve, Volume Displacement Valve, Time-Pressure Valve, Archimedeian Screw Valve.



MULTITALENT SOFTWARE AT YOUR FINGERTIPS State of the art, full graphics, 21.5" 16:9 touch screen, Windows 10 - 64 bit, fingertip operation, real time visualization zoom at camera windows, all-in-one job planning, universal CAD conversion, setup optimization, easy definition of pattern and guided process support

optional.
Valves & Pumps
Media Heating
Level Detection



Needle and jet heating system

Automatic syringe level detection

Full process control meeting automotive standards and more, Adaptation & stabilisation, Integration & datatransfer of existing pick-and-place machines as Diplan, UniCam, Cogiscan etc., Vacuum Cleaning Station, High Precision Scale, Heating/Vacuum Tables



naturally adaptive.



Inline with Puma Pick-and-Place

tarantula.

Process	Max. dispensing speed (dots/h)	Piezo Jet: 145'000 Pneumatic Jet: 77'000	Time-Pressure: 26'000 Volume-/Screw-: 22'000
	Dispense mode	Dot, line, curve, interpolated 3D contour	
Accuracy	Placement XY dots	40 µm (3σ)	
	Positioning Z axis	20 µm (3σ)	
PCB	PCB dimensions	560 x 610 mm (22 x 24"), optional 1'800 x 610 mm (71 x 24")	
Dimensions	Machine footprint	1'557 x 1'357 mm (61 x 53")	



**OUR FOCUS - YOUR SOLUTION
SMART SMT EQUIPMENT**

Wildlife consistently shows us with breathtaking flexibility how nature can adapt itself to the many different demands of its environment; that is what inspires us! Essemtec AG is a privately owned company with its development and production site in Switzerland. The product portfolio comprises of production equipment for electronic assembly and more. Our high tech solutions can be adjusted quickly and easily to meet wide ranging requirements; we are therefore able to respond to all manner of customer requests. That's why "naturally adaptive" is our motto across all ranges.

Disclaimer & Copyright:

Information in this brochure is for general information purpose only. Further details are provided in the specification sheet. All materials contained in this brochure are copyright © Essemtec AG, Switzerland, March 2022.

**Switzerland
Essemtec AG**

Mosenstrasse 20
CH-6287 Aesch/LU
Tel: +41 41 919 60 60
info@essemtec.com

**Germany
Essemtec GmbH**

Oskar-Messter-Strasse 25
DE-85737 Ismaning
Tel: +49 893 803 55 15
info@essemtec.com

**France
Essemtec SAS**

50, Avenue d'Alsace
FR-68000 Colmar
Tel: +49 172 287 56 04
info@essemtec.com

**America
Essemtec USA LLC**

300 5th Ave
Waltham, MA 02451
Tel: +1 856 218 11 31
sales-usa@essemtec.com

