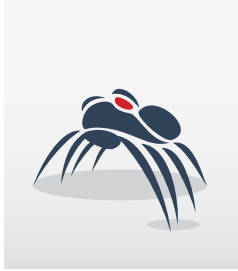




## SMART-SIZED HIGH SPEED DISPENSER

Versatile, Accurate, Artistic & Reliable

naturally adaptive.



# spider.

## SMART-SIZED HIGH SPEED DISPENSER

Introducing - The Spider - PCB design freedom. State of the art technology, easily integrated in any line.



LINE SOLUTION

CELL SOLUTION

### dispense technology.

- Up to 2 valves simultaneously
- 5 different valves, large application range

### productivity.

- Up to 150'000 dots/h (with Piezo Jet Valve)
- Up to 2'000'000 dot/h line mode

### small footprint.

- Requires only 1 m<sup>2</sup> of production floor
- Machine fits through 90 cm wide door

### mineral cast.

- No vibration, symmetrical mineral casting
- No warpage, no thermal drift

### laser height mapping.

- Mapping of heights using laser technology
- Compensation of substrate warp / 3D contour

### linear motors.

- Fast, reliable double drive linear motors
- No maintenance, longest lifetime

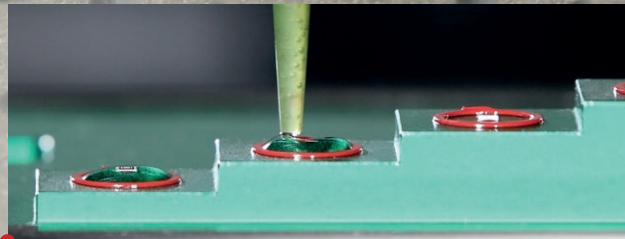
naturally adaptive.



# INTEGRATE INTO HIGH SPEED LINES AND HIGHLY COMPLEX DISPENSE APPLICATIONS



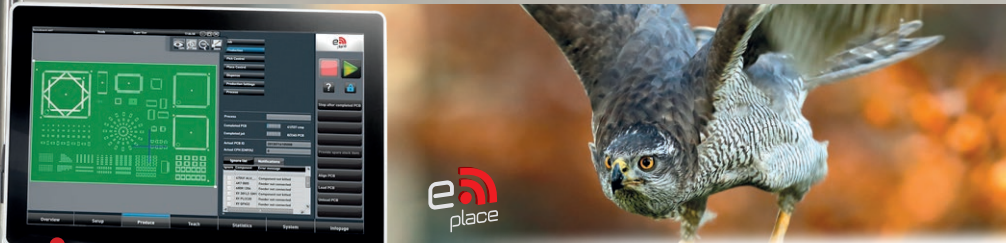
Versatile range of dispensing applications such as Solder Paste and SMT Glue, LED Encapsulation, Silver Epoxy, Dam and Fill, Underfill, Cavity Fill, 2.5D Dispensing via laser height mapping & more



Full operator support - Automated error analysis & KPI. Training, support and troubleshooting via advanced remote access. Investment protection; all options and heads retrofittable.

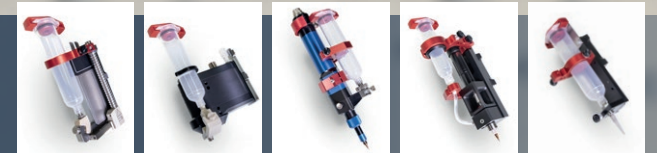


Two processes at the same time. Plug and Play for valve change. Piezo Jet Valve - super high speed for low viscosity. Dynamic Shockwave, Volume Displacement, Time/Pressure, Archimedean Screw Valve



**MULTITALENT SOFTWARE AT YOUR FINGERTIPS** State of the art, full graphics, 21.5" 16:9 touch screen, Windows 10 - 64 bit, fingertip operation, real time visualization zoom at camera windows, all-in-one job planning, universal CAD conversion, setup optimization, easy definition of pattern and guided process support

optional  
Valves & Pumps  
Media Heating  
Level Detection  
Process Control



Needle and jet heating system  
Automatic syringe level detection  
Process control adjustment & stabilization

Vacuum Cleaning Station, High Precision Scale, Clean Room, Heating/Vacuum Table  
Full process control meeting automotive standards and more



naturally adaptive.



Inline with Fox Pick-and-Place

**spider.**

|            |                       |   |  |
|------------|-----------------------|---|--|
| Process    | Max. dispensing speed | Piezo Jet: 150'000 dots/h<br>Pneumatic Jet: 80'000 dots/h | Time/Pressure: 28'000 dots/h<br>Archimedean Screw: 24'000 dots/h |
|            | Dispensing mode       | Dot, line, curve, interpolated 3D contour                 |  |
| Accuracy   | Placement XY dots     | 40 µm (3σ)  |  |
|            | Positioning Z axis    | 20 µm (3σ)  |  |
| PCB        | PCB dimensions        | 50 x 50 mm up to 406 x 305 mm (2 x 2" up to 16 x 12")     |  |
| Dimensions | Machine footprint     | 880 x 1090 mm (34.7 x 43")                                |  |



**OUR FOCUS - YOUR SOLUTION  
SMART SMT EQUIPMENT**

Wildlife consistently shows us with breathtaking flexibility how nature can adapt itself to the many different demands of its environment; that is what inspires us! Essemtec AG is a privately owned company with its development and production site in Switzerland. The product portfolio comprises of production equipment for electronic assembly and more. Our high tech solutions can be adjusted quickly and easily to meet wide ranging requirements; we are therefore able to respond to all manner of customer requests. That's why "naturally adaptive" is our motto across all ranges.

**Disclaimer & Copyright:**

Information in this brochure is for general information purpose only. Further details are provided in the specification sheet. All materials contained in this brochure are copyright © Essemtec AG, Switzerland, March 2022.

|   |  |   |  |
|---|--|---|--|
| <p><b>Switzerland</b><br/><b>Essemtec AG</b><br/>Mosenstrasse 20<br/>CH-6287 Aesch/LU<br/>Tel: +41 41 919 60 60<br/>info@essemtec.com</p> | <p><b>Germany</b><br/><b>Essemtec GmbH</b><br/>Oskar-Messter-Strasse 25<br/>DE-85737 Ismaning<br/>Tel: +49 893 803 55 15<br/>info@essemtec.com</p> | <p><b>France</b><br/><b>Essemtec SAS</b><br/>50, Avenue d'Alsace<br/>FR-68000 Colmar<br/>Tel: +49 172 287 56 04<br/>info@essemtec.com</p> | <p><b>America</b><br/><b>Essemtec USA LLC</b><br/>300 5th Ave<br/>Waltham, MA 02451<br/>Tel: +1 856 218 11 31<br/>sales-usa@essemtec.com</p> |
|---|--|---|--|