

LFS
Slimline Label Feeder
- only 30 mm wide -

LFM
Mediumline Label Feeder
- only 46 mm wide -



LFM
46mm

LFS
30mm



The space-saving labelling solution: only 30 or 46 mm wide

The automatic marking per label feeder is a cost-efficient and simple solution which is used in several cases.

With a width of around 60 mm conventional label feeders are using several feeder positions in the pick and place system – although the labels are in most cases very small – very often much less than 10 x 10 mm.

The Slim Line Label Feeder is the perfect solution for small labels – with the revolutionary width of 30 mm it needs **one feeder position only** in the pick and place system.

Thus it saves ready cash in the production line because space is expensive.

Further advantages:

- Compatible with many popular pick and place systems and special machines
- Feeds the label very simple like a component
- The flexible solution for marking your boards
- Precise and automatic placement of labels
- Reliable electronic operation
- Low maintenance costs
- Saves time and money

The **Slim Line Label Feeder** can be used for all label sizes from 3x3 mm, maximum label length is 25 mm, maximum liner width 15 mm.

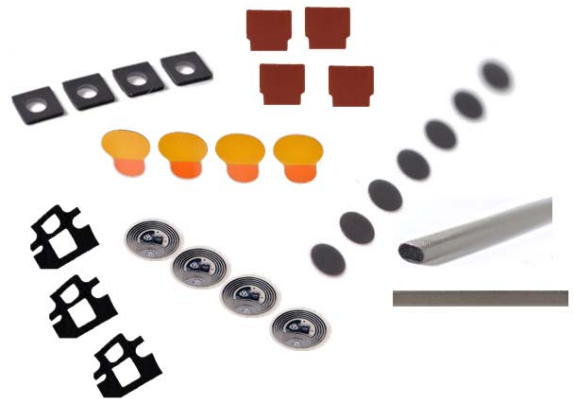
For applications with bigger labels our **Medium Line Label Feeder (LFM)** can be used.

The maximum liner width usable with the LFM is 30 mm – and this at a complete feeder width of only 46 mm!

Not only for labels

With our label feeders as well odd components and functional parts can be fed.

Some examples:



Apply of a round sensor,
3 mm diameter

Compatible with many pick and place systems

Our Slimline and Mediumline Label Feeder can be used in the following pick and place systems:

ASM, K&S, Fuji, Juki & Mycronic – others on request.

Furthermore, both label feeders can easily be integrated into special machines.

