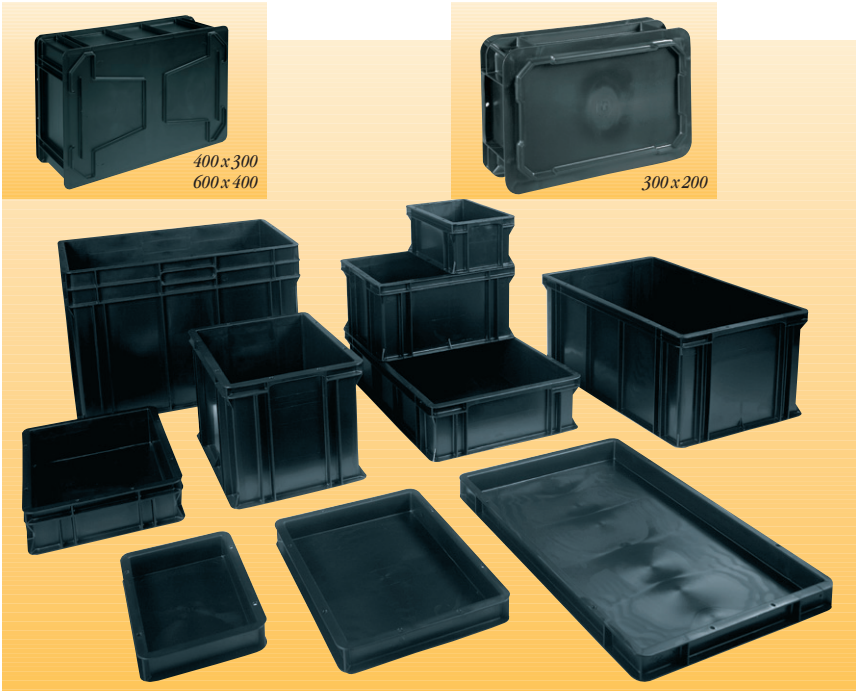




Standard containers



BlackLine standard containers are available in 3 sizes: 300 x 200, 400 x 300 and 600 x 400 mm. Stacking heights range from 44 to 400 mm.

The standard BlackLine containers are designed for European pallets, 1200 x 800 / 1200 x 1000 mm and the different container sizes may be stacked together in a wide range of configurations. A rugged and solid construction with minimal internal draft angle ensures maximum space utilisation. Holes in the top frames allow integration with other system components such as lids, Printorama, etc. Shell handles are included on all containers (except 44 mm high). Exact dimensional tolerances ensure that all BlackLine containers retain compatibility, whatever the age of the product. Average stack loads are 500 kg. Both BlackLine and LogiLine containers are fully compatible, a real WEZ advantage! BlackLine standard containers have the SGL base design.



All containers marked with ESD sign in accordance with IEC 61340-5-1



Standard container design, size 300 x 200 mm.



Standard container design, size 400 x 300 mm.

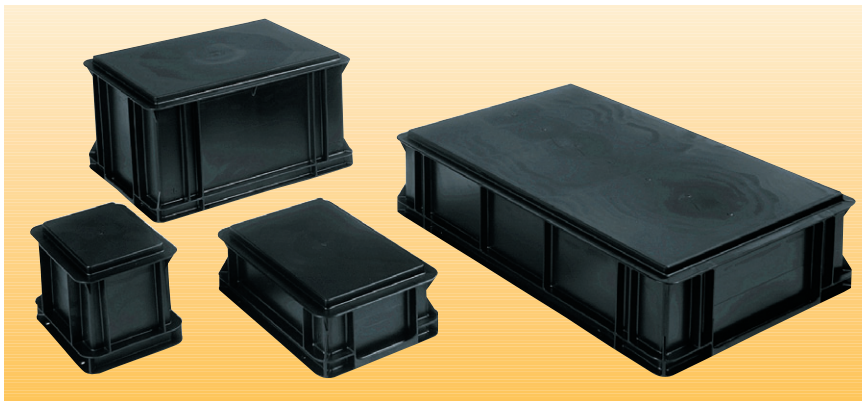


Standard container design, size 600 x 400 mm.

Part No.	External dim. mm	Stacking h. mm	Internal dim. mm	Usable depth	Capacity, litres	Approx weight g
3204.000.992	300 x 200 x 053	44	260 x 160 x 041	31	1.7	290
3208.000.992	300 x 200 x 100	88	260 x 160 x 085	72	3.5	530
3213.000.992	300 x 200 x 145	133	260 x 160 x 130	117	5.4	705
4304.000.992	400 x 300 x 053	44	360 x 260 x 041	31	3.8	625
4308.900.992	400 x 300 x 100	88	360 x 260 x 085	72	8.0	960
4313.900.992	400 x 300 x 145	133	360 x 260 x 130	117	12.1	1130
4320.000.992	400 x 300 x 212	200	360 x 260 x 197	184	18.5	1535
4326.000.992	400 x 300 x 278	266	360 x 260 x 262	249	24.5	1890
4332.000.992	400 x 300 x 320	308	360 x 260 x 304	291	28	2000
6404.617.992	600 x 400 x 056	44	560 x 360 x 041	28	8.25	1080
6408.000.992	600 x 400 x 100	88	560 x 360 x 085	72	17.0	1790
6413.000.992	600 x 400 x 145	133	560 x 360 x 129	116	26.0	2100
6420.000.992	600 x 400 x 212	200	560 x 360 x 196	183	39.0	2635
6426.000.992	600 x 400 x 278	266	560 x 360 x 262	249	52.8	3100
6432.000.992	600 x 400 x 320	308	560 x 360 x 304	291	60	3400
6440.000.992	600 x 400 x 412	400	560 x 360 x 396	383	80.0	4660



Flat-base containers



WEZ BlackLine flat-base containers are available in 4 sizes: 200 x 150, 300 x 200, 400 x 300 and 600 x 400 mm. Stacking heights range from 44 to 400 mm.

WEZ BlackLine flat-base containers are ideal to ensure smooth transportation on conveyor belts, roller tracks or ball tables, etc. and for BlackLine cases. Flat-base containers can be stacked in the normal manner (except over 2 of the next smaller size) and they have the same features as our standard containers (see page 6).



All containers marked with ESD sign in accordance with IEC 61340-5-1

Part No.	External dim. mm	Stacking h. mm	Internal dim. mm	Usable depth	Capacity, litres	Approx weight g
2108.007.992	200 x 150 x 100	88	155 x 106 x 096	84	1.6	240
2113.007.992	200 x 150 x 145	133	155 x 106 x 142	129	2.7	375
3208.007.992	300 x 200 x 100	88	254 x 154 x 096	83	3.75	520
3213.007.992	300 x 200 x 145	133	254 x 154 x 141	128	5.5	720
4304.007.992	400 x 300 x 053	44	354 x 254 x 049	40	4.4	540
4308.907.992	400 x 300 x 100	88	354 x 254 x 096	83	8.7	1030
4313.907.992	400 x 300 x 145	133	354 x 254 x 141	128	12.8	1200
4320.007.992	400 x 300 x 212	200	354 x 254 x 208	195	19.2	1610
4326.007.992	400 x 300 x 278	266	354 x 254 x 274	261	25.2	1975
4332.007.992	400 x 300 x 320	308	354 x 254 x 316	303	29.0	2100
6408.007.992	600 x 400 x 100	88	554 x 354 x 096	83	19.0	1650
6413.007.992	600 x 400 x 145	133	554 x 354 x 141	128	28.0	2050
6420.007.992	600 x 400 x 212	200	554 x 354 x 208	195	41.0	2550
6426.007.992	600 x 400 x 278	266	554 x 354 x 273	260	55.0	3070
6432.007.992	600 x 400 x 320	308	554 x 354 x 316	303	62.0	3400
6440.007.992	600 x 400x412	400	554 x 354 x 407	393	82.0	4605



VISTA storage containers



BlackLine VISTA containers are available in 3 sizes and are fully compatible with all WEZ standard containers. They feature an inspection / handling opening on the front, optional transparent or conductive panels and a rugged

suspension system, capable of taking up to 25 kg. Reinforced ribbed base offers high loading capabilities with perfect movement on roller systems. Suspension racks are also available in either bench or trolley versions.

Part No.	Description	Ext. dim. mm	Int. dim. mm
2113.550.992	VISTA storage containers	200 x 150 x 145	155 x 135 x 130
3213.550.992	VISTA storage containers	300 x 200 x 145	255 x 180 x 130
4313.550.992	VISTA storage containers	400 x 300 x 145	355 x 260 x 130
9980.059.000	Front panel F32/21, transparent	120 x 065	
9980.060.000	Front panel F43, transparent	180 x 065	
9980.073.000	VISTA labels, per 100	025 x 080	



Containers with heavy-duty bases

Availability on request only!



Reinforced base 004 for container 400 x 300 mm. Base ribs 12 mm high. For weights up to approx. 35 kg.



Reinforced base 613 for container 600 x 400 mm. Base ribs 15 mm high. For weights up to approx. 35 kg.



Heavy-duty base 607 for container 600 x 400 mm. Base ribs 17 mm high with central gap. For weights up to approx. 50 kg.



Heavy-duty base 626 and 611 for container 600 x 400 mm. Base ribs 15/18.5 mm high. For weights up to approx. 50–60 kg.

WEZ containers with heavy-duty bases are indispensable where minimum base deflection is required; ideal for high bay warehouses. The rugged honeycomb base is contained within the standard stacking profile to ensure low noise emission on conveyors.



Typical use for heavy-duty-base containers in a high bay warehouse, where minimal base deflection is essential.

Part No.	Ext. dim. mm	Int. dim. mm	Rib height mm	Approx. load kg
4313.004.992	400 x 300 x 145	360 x 260 x 130	12	35
4320.004.992	400 x 300 x 212	360 x 260 x 196	12	35
4326.004.992	400 x 300 x 278	360 x 260 x 262	12	35
6413.613.992	600 x 400 x 148	560 x 360 x 130	15	35
6413.607.992	600 x 400 x 150	560 x 360 x 130	17	50
6413.626.992	600 x 400 x 148	560 x 360 x 130	15	50
6413.611.992	600 x 400 x 152	560 x 360 x 130	18.5	60
6420.626.992	600 x 400 x 215	560 x 360 x 196	15	50
6426.613.992	600 x 400 x 281	560 x 360 x 262	15	35
6426.607.992	600 x 400 x 283	560 x 360 x 262	17	50
6426.626.992	600 x 400 x 282	560 x 360 x 262	15	50
6426.611.992	600 x 400 x 285	560 x 360 x 262	18.5	60
6432.626.992	600 x 400 x 323	560 x 360 x 304	15	50
6432.611.992	600 x 400 x 326	560 x 360 x 304	18.5	60
6440.626.992	600 x 400 x 415	560 x 360 x 396	15	50



Lids



Loose lid without fasteners, 3 sizes.
Code:..... . 000. ...



Lid with 4 swing latches for simple, secure fixing to container, 3 sizes. Code:..... . 044. ...

BlackLine lids for all BlackLine containers, in three sizes and three different versions. Containers will stack even when the lids are fitted.



Hinged lid with 2 swing latches. Plug-in hinges, which may be removed with the lid open. 3 sizes. Code:..... . 032. ...



Hinged lid with integral document holder. A4 size, ideal for operating manuals, product literature, etc. 400 x 300 size only.



All lids marked with ESD sign in accordance with IEC 61340-5-1



Plug-in hinge, cannot be removed with lid closed.



Swing latches (pair), for reliable lid closure. Easily retrofitted to 000 version lid.



Lid seal to prevent unauthorised opening of swing latches. Ensures 100% product security.

Part No.	Size mm	Item / option
3200.000.992	300 x 200	Lid, loose
4300.000.992	400 x 300	
6400.000.992	600 x 400	
3200.032.992	300 x 200	Hinged lid with 2 swing latches
4300.032.992	400 x 300	
6400.032.992	600 x 400	
3200.044.992	300 x 200	Lid with 4 swing latches
4300.044.992	400 x 300	
6400.044.992	600 x 400	
4300.932.992	400 x 300	Lid with integral A4 document holder
9980.011.992		Lid hinge
9980.012.994		Swing latches (pair)
9980.141.000		Lid seal, per 100



Standard carrying cases



WEZ BlackLine carrying cases are ideal for product packaging and presentation as well as field service and repairs, etc. Standard version with flat base, comfortable handle and hinged lid. 3 standard sizes, in a range of heights.



Customised interior e.g. with pre-perforated foam interior blocks to suit your product. (See page 11 for details.)



Customised interior e.g. with Printorama® Secondo for safe transport of modules of every size. (See pages 12–15 for details.)



Customised e.g. with product-specific vacuum-formed insert, as sales or presentation package. Ask for details.

Part No.	External dim. mm	Internal dim. mm
3204.390.992	300 x 200 x 063	260 x 160 x 039
3208.397.992	300 x 200 x 110	254 x 154 x 095
3213.397.992	300 x 200 x 154	254 x 154 x 139
4304.397.992	400 x 300 x 063	354 x 254 x 048
4308.397.992	400 x 300 x 110	354 x 254 x 095
4313.397.992	400 x 300 x 154	354 x 254 x 139
4320.397.992	400 x 300 x 221	354 x 254 x 206
4326.397.992	400 x 300 x 287	354 x 254 x 272
6408.397.992	600 x 400 x 111	554 x 354 x 095
6413.397.992	600 x 400 x 155	554 x 354 x 139
6420.397.992	600 x 400 x 221	554 x 354 x 206
6426.397.992	600 x 400 x 288	554 x 354 x 272

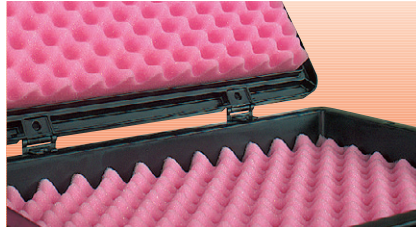


Carrying case fittings and accessories

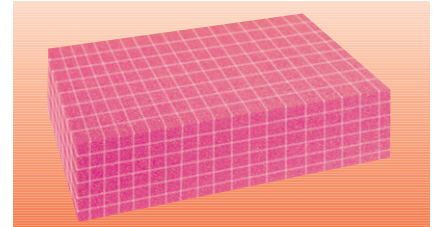
Useful accessories, practical additions for customising your BlackLine carrying case.



Case with reinforced lid and lock to protect your valuable products from unauthorised access. Various sizes to order.



Profiled foam insert for WEZ lid sizes 600 x 400 and 400 x 300 mm. Standard quality available from stock: pink ESD. Ask about other materials and sizes.



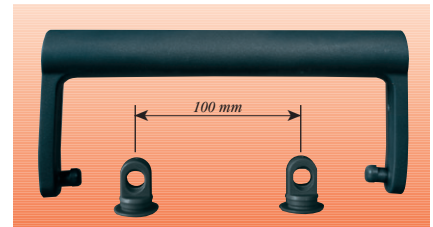
Pre-perforated antistatic pink foam blocks for customised shaping to your requirements. Max thickness 85 mm. Two sizes for either 600 x 400 and 400 x 300 mm containers.



Foam inserts in various sizes and materials. Standard sizes to fit 600 x 400 and 400 x 300 mm containers. Standard material is PUR conductive foam, 6 and 15 mm thick. Other sizes and materials on request.



Lid seal to prevent unauthorised opening of swing latches. Ensures 100% product protection.



Case handle 95 for mounting on BlackLine containers. Simply drill 2 10 mm holes, as shown in the instructions, fit mountings from the inside and clip in handle 95—and it's finished!

Part No.	Description	Size mm
OPTION	Reinforced lid with lock	600 x 400 / 400 x 300
2535.030.992	Profiled foam insert 1:1, pink, ESD foam, loose	252 x 352 x 30
2535.031.992	Profiled foam insert 1:1, pink, ESD foam, glued-in	252 x 352 x 30
3555.030.992	Profiled foam insert 1:1, pink, ESD foam, loose	352 x 552 x 30
3555.031.992	Profiled foam insert 1:1, pink, ESD foam, glued-in	352 x 552 x 30
2636.085.992	Pre-perforated antistatic pink foam block for 4308	260 x 360 x 85
3656.085.992	Pre-perforated antistatic pink foam block for 6408	360 x 560 x 85
2636.006.000	PUR foam insert, loose	258 x 358 x 06
2636.006.001	PUR foam insert, glued-in	258 x 358 x 06
3656.006.000	PUR foam insert, loose	358 x 558 x 06
3656.006.001	PUR foam insert, glued-in	358 x 558 x 06
2636.015.000	PUR foam insert, loose	258 x 358 x 15
2636.015.001	PUR foam insert, glued-in	258 x 358 x 15
3656.015.000	PUR foam insert, loose	358 x 558 x 15
3656.015.001	PUR foam insert, glued-in	358 x 558 x 15
9980.141.000	Lid seal, per 100	Translucent
63.9980.128.000	Case handle 95, loose	Black, conductive
63.9980.129.000	Mounting for handle 95	Black, conductive
63.9980.828.000	Case handle 95, mounted	Black, conductive